

Applying to Kindergarten

for families of children born in 2021



Advocates for Children of New York

Protecting every child's right to learn



Transition to Kindergarten

2

- All children born in 2021 have the right to a public-school kindergarten seat in September 2026
- Two processes for families of children with disabilities:

Kindergarten
IEP

Special Education
Program and Services

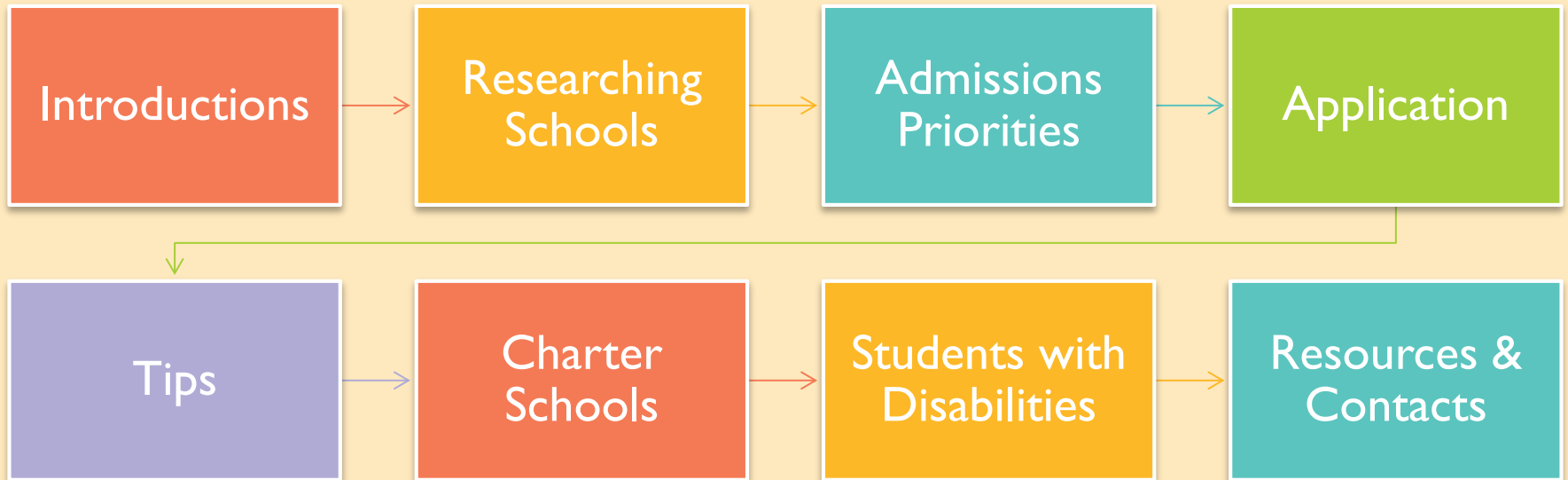
Kindergarten
Admissions

Applying to DOE
Schools



Today's Training

3



**Advocates
for Children
(AFC)** is an
independent
agency that
protects the
rights of all
NYC
students.



Helpline: **1-866-427-6033**
(Mon-Thurs, 10am – 4pm)



Free legal services to low-income
families



Guides and resources:
www.advocatesforchildren.org



Workshops and trainings



Policy Advocacy and Impact
Litigation





Trivia

During the
DOE's
Kindergarten
Admissions
Process you
can apply to...



- a. DOE non-specialized schools**
- b. charter schools**
- c. private schools**
- d. all of the above**



Process Overview

6

Process is for District I-32 Non-Specialized Schools

Research Schools

Apply this Winter

Receive Offer this Spring

Accept Offer this Spring

Hear from Waitlists





Researching Schools

7

Find Your Zoned School

- schoolsearch.schools.nyc
- MySchools.nyc
- Call 311

Research School Options

- Calendar of open houses MySchools.nyc
- MySchools.nyc online directory
- Inside Schools <http://insideschools.org>

Understand Admissions Priorities

- schools.nyc.gov/kindergarten



Researching Schools

8

NYC MY SCHOOLS

Welcome!

NYC families can use **MySchools** to apply to public schools from 3-K to high school. Get started by creating an account. Then explore your children's personalized school options and get guidance on the admissions process from start to finish.

MySchools.nyc is dedicated to our friend and colleague, Dave Yang, who spearheaded the creation of this enrollment platform, and who was a force for change and progress at NYC DOE.

NYC MY SCHOOLS

School Directory Calendar Enrollment Support

Your Child's Address

Search by school name, interests, etc.

District School Type Dual Language Gifted & Talented

Magnet Schools & STEM Discovery Specialized Programs

Need Before or After School Care? Have a Child Applying to 3-K or Pre-K?

Diversity in Admissions Building Accessibility

Academy For Personal Leadership And Excellence (10X363) ✓

NON-ZONED SCHOOL | DISTRICT 10

K-8

Clifton North Bergen Union City Hoboken Jersey City Newark

Map showing the location of the Academy For Personal Leadership And Excellence (10X363) in the Bronx, near the Hudson River and the New York City skyline.

← Back to List

Academy For Personal Leadership And Excellence (10X363) ✓

NON-ZONED SCHOOL | DISTRICT 10

K-8

Print

120 EAST 184 STREET, BRONX, NY, 10468

MS363APLE.ORG

aledda@schools.nyc.gov

718-220-3139

Reyna Lachapell

K-8

742

8:15 AM - 2:35 PM

Special Education Programs
English Language Learner Programs

Shared Space: No

Subway
4 to 183rd St; B, D to Fordham Rd

Bus
Bx1, Bx12, Bx12-SBS, Bx2, Bx22, Bx28, Bx3, Bx32, Bx34, Bx41, Bx41-SBS, Bx9, BxM4

Overview

In 2024, The Academy for Personal Leadership and Excellence opened our brand new elementary school building, located directly across the street from the middle school building, located at 2347 Morris Avenue. As we grow into a full K-8 school by the year 2025, the school is looking forward to serving the



Kindergarten Admissions Priorities

9

Admissions Priorities for Zoned Schools:

(1, 2) Child lives in school zone

(3, 4) Sibling will also be attending the school

(5, 6) Child currently attends school's pre-K program

(7) Other students in district

(8) Other students outside the district



Students who need an accessible school will receive an offer before other students in their priority group.



Trivia

Children are most likely to receive a kindergarten offer to...



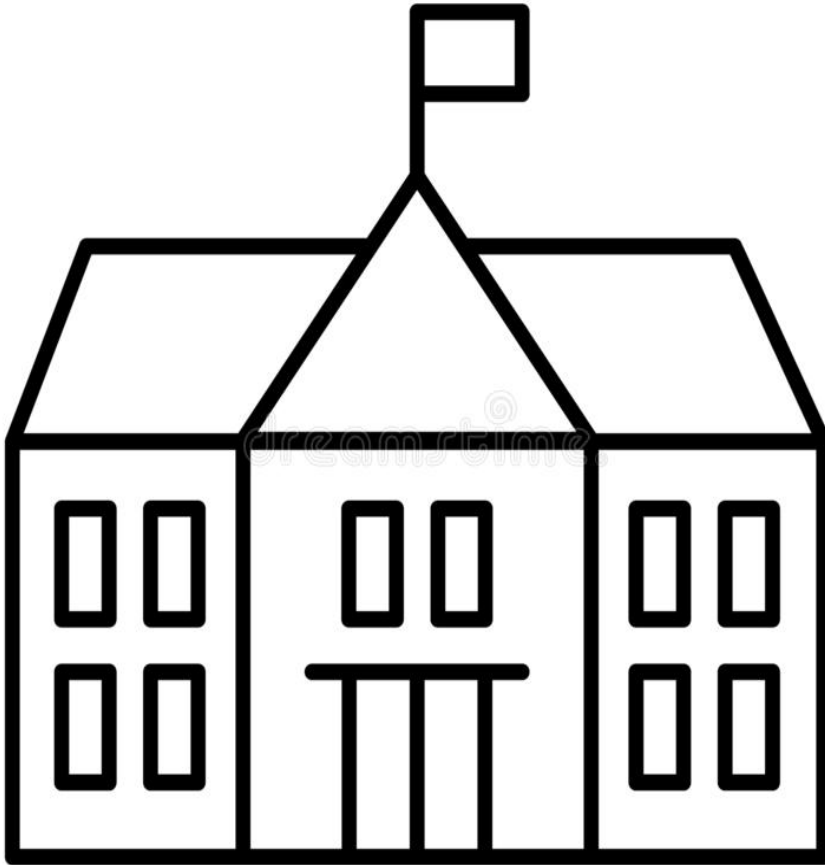
- a. the school they attended for Pre-K**
- b. the school their sibling(s) attend(s)**
- c. their zoned school**
- d. their top choice school**



Kindergarten Admissions Priorities



PS 123 (Zoned School)



PS 123 has 20 kindergarten seats. These students applied:

- 10 in-district students with a sibling at the school
- 5 zoned students
- 9 other in-district students
- 1 non-district student who attends Pre-K at PS 123



Trivia

Who are the first students who will receive an offer to PS 123?



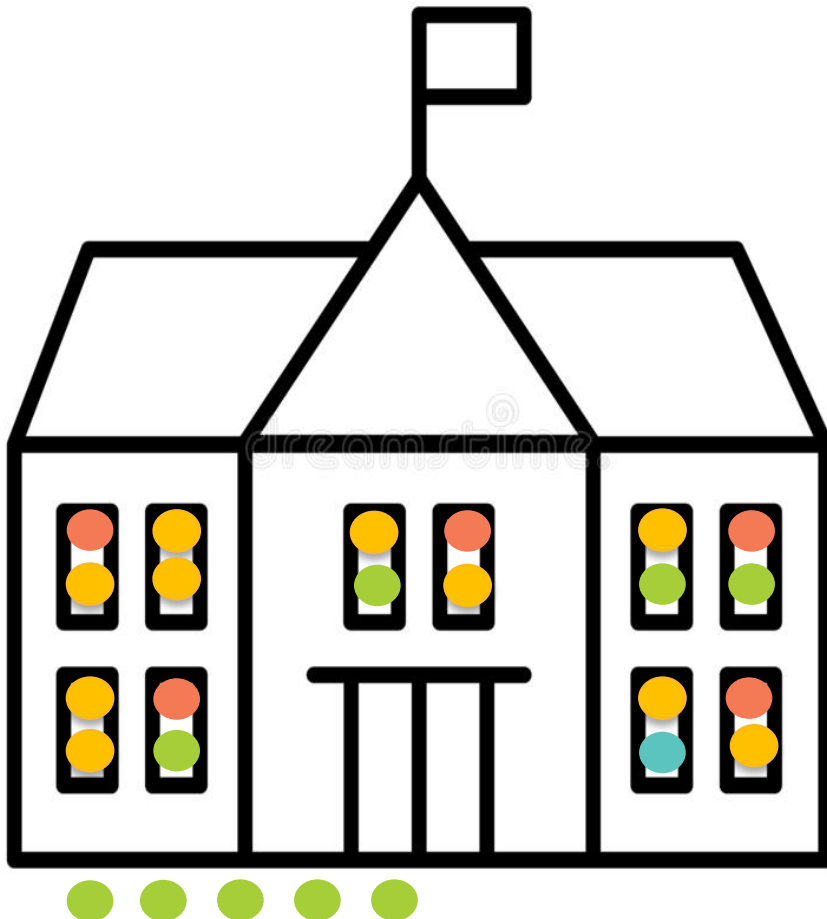
- a. zoned students**
- b. students who live in the district**
- c. students currently attending pre-k at PS123**
- d. students who apply first**



Kindergarten Admissions Priorities

13

PS 123 (Zoned School)



PS 123 has 20 kindergarten seats. These students applied:

- 10 in-district students with a sibling at the school
- 5 zoned students
- 9 other in-district students
- 1 non-district student who attends Pre-K at PS 123



Exceptions

14

- Non-Zoned School Districts (No Zoned-Schools)
 - District 1 – Lower East Side, Manhattan
 - District 7 – South Bronx
 - District 23 – Brownsville, Brooklyn
- Non-Zoned Schools Admissions Priorities
 - ↓ Sibling in the school
 - ↓ Pre-K student in the school
 - ↓ Live in school district
 - ↓ Live outside the school district
- For each school's admissions priorities, visit [MySchools.nyc](https://www.myschools.nyc.gov/).



Questions?



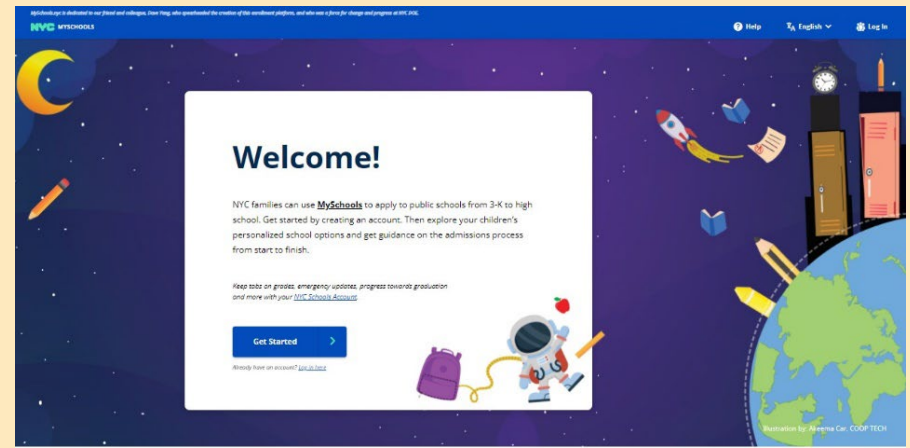


How to Apply

16

- Apply December 9, 2025 – January 23, 2026:

- Online at [MySchools.nyc](https://www.myschools.nyc.gov)
- Call 718-935-2009
(Monday-Friday, 8am-6pm)
- Visit a [Family Welcome Center](#)



- You can apply in your preferred language!



Applying to G&T

17

Apply

- Apply to [Gifted and Talented](#) programs through the kindergarten application

Eligibility

- Preschool teacher will evaluate or
- DOE staff will schedule interview

Offers

- The DOE will make offers to eligible families based on admissions priorities (ex: sibling, in-district)



Tips

18

- Rank schools in order of preference!
- Think about:
 - admissions priorities
 - applying to your zoned school or a school that is likely to admit your child
 - transportation





Transportation

19

On IEP



Door-to-Door

Home is more than 1/2 mile from school and in district



School-to-Stop Bus

OMNY Card

Students in temporary housing & in foster care



EarlyChildhood
Busing@schools.
nyc.gov

718-392-8855

[schools.nyc.gov/
transportation](https://schools.nyc.gov/transportation)



Questions?



After Applying

21

Offers

Waitlist



Accept &
Register

Medical &
Reasonable
Accommodations
Transfers





Registration

22

One Proof of Child's Age

- Birth certificate, passport, record of baptism

Two Proofs of Address

- Lease, deed, mortgage statement, utility bill, rent receipt, government ID

You do not need to provide proof of citizenship or a Social Security number.

Students in Temporary Housing have a right to immediate enrollment



Trivia

When you accept a kindergarten offer and register your child at the school, you are...



- a. taking your child off the waitlist for other schools**
- b. reserving a seat for your child at that school**
- c. no longer eligible to apply to charter schools**
- d. all of the above**



Charter Schools

24

Find schools here:
nyccharterschools.org.

Apply to a school directly or
online at
nyccharterschools.org/apply.

Free Public School
Not Run By DOE

Charter schools must serve
students with disabilities.

Most applications are due by
April 1st.



Students with Disabilities

25



PRIOR WRITTEN NOTICE (NOTICE OF RECOMMENDATION)

Dear Parent or Guardian of JOHN DOE

Student's DOB: 00/00/2013

Local ID: 123456789

Date: 06/15/2018

The purpose of this notice is to inform you, in writing, of the school district's recommendation(s) regarding the identification, evaluation, educational placement and/or provision of special education services to JOHN DOE.

SUBJECT OF THIS NOTICE: School Location

DESCRIPTION OF ACTION PROPOSED OR REFUSED:

The Committee on Special Education recommended that your child be identified as having an educational disability, specifically: Speech or Language Impairment

The Committee recommended that your child receive the following educational program.

10 Month School Year

Placement

NYC DOE School Non-Specialized (District 1-32)

Special Education Services

Integrated Co-Teaching Services

Related Services/ Supplementary Aids and Services/ Assistive Technology

Occupational Therapy(Individual), Physical Therapy(Individual), Speech-Language Therapy(Group)

You may bring your child to the following school on 09/04/2018 where he/she will receive these services:

Name: P.S. 117 J. Keld / Briarwood School

Address: 85-15 143 STREET, QUEENS, NY, 11435

Telephone Number: 718-526-4780

You may also visit this school by contacting the people listed below for assistance in arranging a visit:

Before 6/28/2018, Contact: Devoard Owens Telephone Number: 718-526-4780

Address: 85-15 143 Street, Queens, NY, 11435

On or after 6/28/2016, Contact: Fabiana Czemerinski Telephone Number: 718-557-2553

Address: 90-27 Sutphin Boulevard, Jamaica, NY, 11435

EXPLANATION OF WHY THE ACTION IS PROPOSED OR REFUSED:

At the meeting held on 03/18/2016, to which you were invited, the assessments and materials identified below were reviewed and discussed and it was determined that your child meets the eligibility criteria for an educational disability as defined in Part 200 of the regulations of the Commissioner of Education. In addition, an Individualized Education Program (IEP) was developed recommending the special education and related services that will meet his/her educational needs. The school listed above was chosen because it can provide the program and services on your child's IEP.

DESCRIPTION OF EACH EVALUATION PROCEDURE, ASSESSMENT, RECORD, OR REPORT USED IN THE DECISION TO PROPOSE OR REFUSE THE ACTION:

Kindergarten
Admissions



Kindergarten
IEP



School
Location
Letter

Check to make sure the school on your School Location Letter (SLL) can give your child the services and program on their IEP!



Questions?





Language Access Rights: Translation & Interpretation

27

You have the right to receive translation and interpretation services in NYC Public Schools

Spanish

French

Arabic

Chinese

Bangla

Urdu

Russian

Korean

Haitian-
Creole

Uzbek

Ukranian

Albanian

+ languages
not listed

Concerns or complaints regarding language access? 📞 718-935-2200

You can also submit a complaint by completing the online form [here](#).



Application Resources

28

- AFC's [Applying to Kindergarten Guide](#)
- DOE Resources
 - [MySchools.nyc](#)
 - [schoolsearch.schools.nyc](#)
 - [schools.nyc.gov/K](#)
 - How Students Get Offers Video ➡





Additional Support

29

Family Welcome Centers

- Located throughout the City
- schools.nyc.gov/FWC

DOE Office of Student Enrollment

- ESenrollment@schools.nyc.gov
- 718-935-2009

Advocates for Children

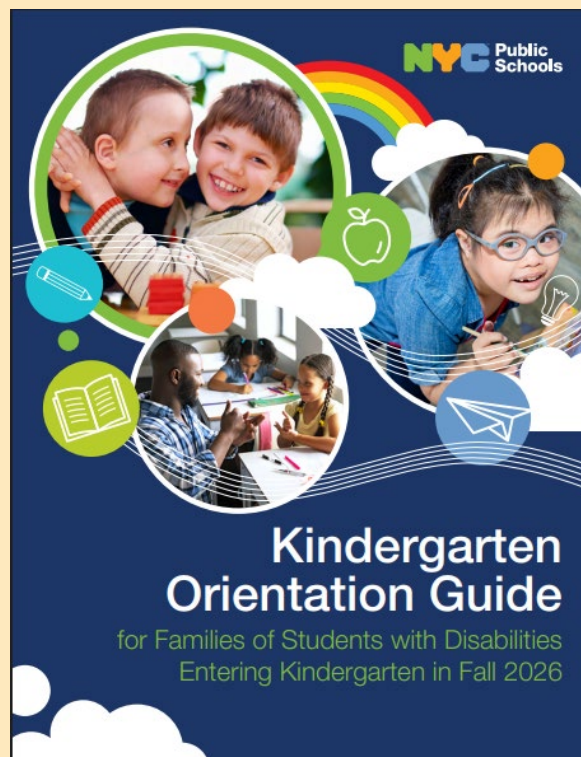
- Helpline: 866-427-6033 (toll free)
- Monday-Thursday, 10am-4pm



Special Education Resources

30

- AFC's [Transition to Kindergarten Guide](#) & [Transition to Kindergarten Fact Sheet](#)
- DOE Resources
 - [Kindergarten Special Education](#)
 - ✦ Kindergarten Orientation Guide
 - [District 75](#)
 - [Specialized Programs](#)





Special Education Resources

31

- DOE Kindergarten Orientation Meetings
 - [Live Sessions](#)
 - [Pre-recorded sessions](#)

Kindergarten Orientation Meetings

for Families of Students with Disabilities Born in 2021

LIVE WEBINAR (Online)
Please register in advance by using the registration link for the day you would like to attend.

NOV 13	DEC 2	DEC 4
THURSDAY 6:00pm—7:30pm Meeting ID: 280 804 861 892 7 Passcode: VX9Tu9ft Registration Link: https://tinyurl.com/Nov13KOM	TUESDAY 9:30am—11:00am Meeting ID: 244 006 133 324 5 Passcode: kr98rf2s Registration Link: https://tinyurl.com/Dec02KOM	THURSDAY 6:00pm—7:30pm Meeting ID: 284 984 923 539 3 Passcode: z8xA9Gg9 Registration Link: https://tinyurl.com/Dec04KOM SPANISH ONLY

JAN 8	JAN 27
THURSDAY 9:30am—11:00am Meeting ID: 266 501 423 274 7 Passcode: Uz9Va72b Registration Link: https://tinyurl.com/Jan08KOM SPANISH ONLY	TUESDAY 9:30am—11:00am Meeting ID: 222 695 244 182 3 Passcode: c8br7YM2 Registration Link: https://tinyurl.com/Jan27KOM

To join the webinar using the Meeting ID and Passcode, scan the QR code or visit:
<https://www.microsoft.com/en-us/microsoft-teams/join-a-meeting>



Please join us to learn more about a Kindergarten Individualized Education Program (IEP), special education services for school-age students, and applying to Kindergarten!

- All meetings cover the **same** information. Families are welcome to attend any meeting that is convenient for them. **We encourage you to register in advance.**
- Meetings will begin promptly. Please log in 15 minutes early prior to start time.
- If you need interpretation for Arabic, Bengali, Cantonese, French, Haitian Creole, Korean, Mandarin, Russian, or Urdu, please visit schools.nyc.gov/KindergartenSpecialEducation to view our webinar with provided closed captioning.



NYC Public Schools



Advocates for Children of New York
Protecting every child's right to learn

Call us with questions!



Helpline: 866-427-6033 (toll free)
Monday-Thursday, 10am-4pm

info@advocatesforchildren.org



Questions?

